

Adam Calvert Bentley and Ardgowan Antiques

Call +44 7545 220052



Exceptional Pair of Antique Bronze and Ormolu Caryatid Lamps by F. Barbedienne

£6,750

A magnificent pair of patinated bronze and ormolu caryatid lamps. Each modelled as a different female figure standing bare-foot and wearing a peplos pinned on each shoulder and tied to the front at the waist; supporting elaborate capitals with egg-and-dart decoration in ormolu and raised on triform ormolu bases consisting of angels playing trumpets flanked by masks of mythical beasts and further baroque decoration of shells, fruit and ribbons and raised on paw feet.

The figures, modelled after the two central figures found in 'The Salle des Cariatides' in The Louvre, Paris (illustrated) were cast by the famous Parisian foundry F. Barbedienne and bear the Collas reduction stamp "Reduction Mecanique A Collas Brevete". The sculptor being Louis-Constant Sevin (1821-1888) who worked as an apprentice sculptor in Paris for various sculptors and for Barbedienne from the mid 19th century until the end of his life, he won many awards for his sculptures.

Lamps of this model were produced in two different sizes, the offered pair being the larger of the two. Due to the high cost of production, few were manufactured and in fact, of the three other pairs known to exist, these are the only known pair of the larger size.

Wired for electricity with silk braided flex. These lamps can be wired in our workshop for use in any country

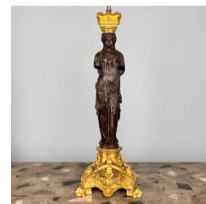
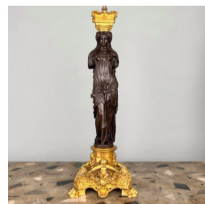
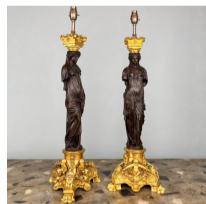
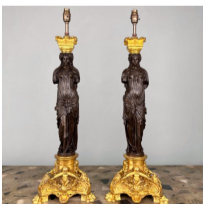
SKU: N/A

Depth: 22 cm (8.75 inches)

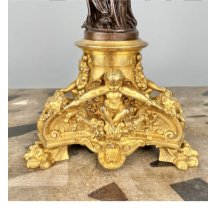
Height: 73 cm (28.75 inches) including bulb holder. 61 cm to top of capital

Width: 23 cm (9 inches)

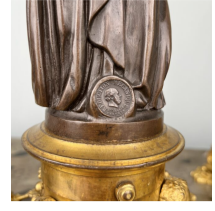
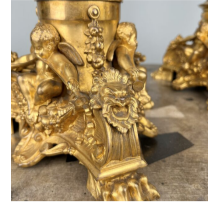
Year: French. Circa 1870



Adam Calvert Bentley and Ardgowan Antiques



545 220052



The Barbedienne foundry was set up in 1838 by Ferdinand Barbedienne and Achille Collas. Collas invented a mechanical process to create smaller bronze figures from statues, particularly of Greek & Roman origin. The foundry producing many fine pieces over the years and worked closely with many artists.