

# Adam Calvert Bentley and Ardgowan Antiques

Call +44 7545 220052



**Fine Pair of Bronze, Gilt-Bronze and Marble Candelabra by Alfred Beurdeley**

**£5,500**

A fine pair of bronze, gilt-bronze and marble candelabra by Alfred Beurdeley, each with two laurel-cast candle-branches growing from a tree-trunk fronted by a sportive and extremely musical infant satyr, one playing a triangle the other a tambourine, the rouge Royale marble plinths raised on elaborate neo-classical bases.

Stamped several times BY for Beurdeley

A photograph of the same model of candelabra standing on different bases is in the Beurdeley archive (illustrated here)

---

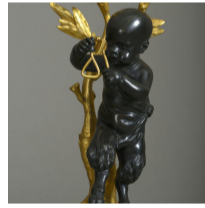
**SKU:** B4549

**Depth:** 13 cm (5.25 inches)

**Height:** 44 cm (17.25 inches)

**Width:** 18 cm (7 inches)

**Year:** French. mid 19th century



Three generations of the Beurdeley family produced fine articles in bronze, gilt-bronze and marble.

The firm was started by Jean Beurdeley (1772-1853), continued by his son, Louis-Auguste Alfred Beurdeley (1808-1882), and was continued by his son, Emmanuel Alfred Beurdeley (1847-1919)

**Provenance:**

Christies sale "The Opulent Eye - 500 Years: Decorative Arts Europe"

London 14 March 2013 Lot 221 (£10,000)