

Adam Calvert Bentley and Ardgowan Antiques

Call +44 7545 220052



A Large Victorian Giltwood Chandelier

£8,500

A large and impressive gilt-wood chandelier in the style of William Kent, almost certainly by Lenygon & Co, the central vase-shaped baluster stem supporting six scrolling scale-carved candle-branches. Wired with *French candle* fittings for electricity

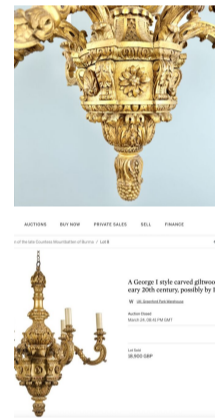
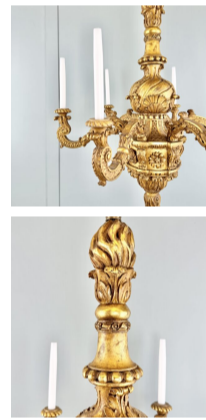
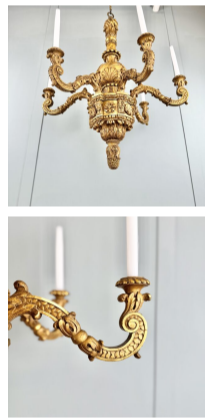
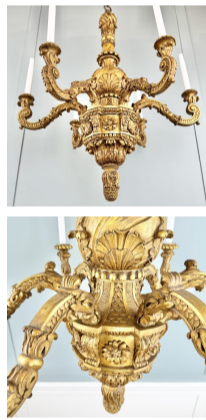
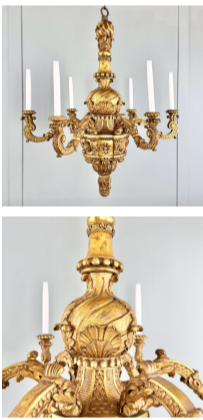
This chandelier can be wired in our workshop for use in any country

SKU: C4802

Height: 108 cm (42.5 inches)

Width: 95 cm (37.5 inches)

Year: Late 19th century or early 20th Century



For a closely related example, see Sotheby's London, *The Family Collection of the late Countess Mountbatten of Burma*, 24th March 2021, Lot 8 (£18,900 incl. BP) (here illustrated).

Based on the giltwood chandelier from Hamilton Palace now in the Victoria & Albert Museum, the design attributed to William Kent (here illustrated)

This boldly carved chandelier relates to a group of light fittings by the London firm of Lenygon & Co., the great Edwardian revivalists of 18th century cabinet making and design. They were expert copyists and (as Lenygon & Morant) produced a set of three giltwood chandeliers in 1939, which were presented to Queen Elizabeth for Windsor Castle. These were based on a famous set of six George II giltwood examples produced originally for Kensington Palace. The present chandelier is identical to another example by the firm, hanging in their showroom at 31 Old Burlington Street, London, (illustrated hanging in the 'Cedar Room'; Francis Lenygon, *The Furniture and Decoration of English Mansions During the XVII. & XVIII Centuries*, London, 1909, frontispiece).