

Adam Calvert Bentley and Ardgowan Antiques

Call +44 7545 220052



Louis XVI Style Bronze Lantern

£4,750

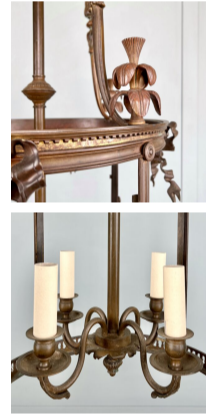
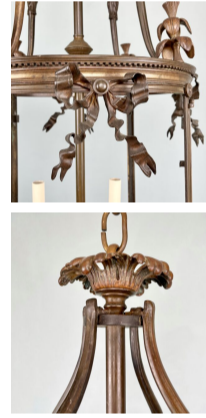
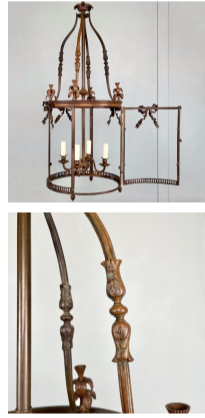
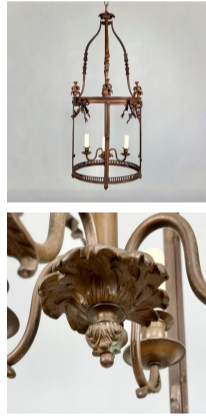
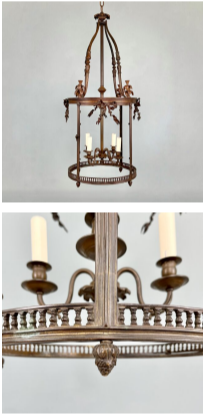
A Louis XVI style bronze lantern of exceptionally fine quality and large scale. The cylindrical body with balustrade base, dentil pediment centred by ribbon bows below ostrich plume finials. Suspended from four serpentine ribs below an acanthus leaf finial. Currently awaiting replacement glazing (included in the price). Wired for electricity

SKU: C4365

Diameter: 48 cm (19 inches)

Height: 106 cm (41.5 inches)

Year: French. Circa 1890



The design based on the lantern produced for Marie Antoinette at Petit Trianon in the grounds of Versailles. The original in gilt bronze still hangs in the Antechamber and is illustrated here.