

# Adam Calvert Bentley and Ardgowan Antiques

Call +44 7545 220052



## Pair of 17th Century Crewelwork Panels or Curtains

A sensational pair of crewel work hangings worked in coloured wools with bold Tree of Life & Tudor Rose design on a linen ground. The overall designs of each panel being a mirror image of the other

Such colourful woollen embroideries on linen grounds were popular for four poster beds and wall hangings from the late Elizabeth period & especially in the last half of the 17th century, the swirling & exotic tree of life designs were influenced by Hindu textiles brought to Europe by the pioneering East India Co., the designs were anglicised so you can see here acorn leaves & plentiful heraldic roses, the roses in the offered works are an uncommon feature and make a powerful statement of allegiance therefore, it's intriguing to speculate on actual royal connections, the Tudor rose remained a symbol of monarchy, of union & of England throughout the 17th century, William & Mary adopted it as an emblem of their rule, it appears on decorative objects they commissioned such as delftware, items sometimes given as gifts to nobility & supporters. They could be used for a bed project but are also a great size to make a bold statement as wall hangings.

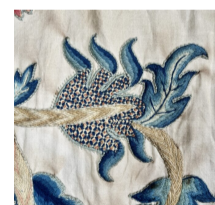
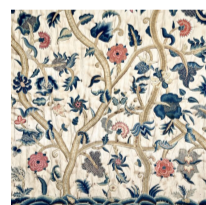
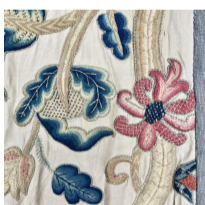
---

**SKU:** C4007

**Height:** 214 cm (84.25 inches)

**Width:** 203 cm and 212 cm

**Year:** English. 1690-1710



### Provenance:

Recently removed from Clifford Chambers Manor near Stratford, prior to that in the 1980s they came from Nailcote Hall in South Warwickshire where they would have most likely formed part of the original interior decoration

**Adam Calvert Bentley**  
and  
Ardgowan Antiques

Call +44 7545 220052

**Adam Calvert Bentley**  
and  
Ardgowan Antiques