

Adam Calvert Bentley and Ardgowan Antiques

Call +44 7545 220052



Pair of George IV Torcheres

£3,900

A fine pair of George IV rosewood torcheres in the style of Thomas Chippendale, the circular tops with balustrade galleries, each above triple scrolling bracket supports centred by urn finials above fluted turned shafts supported on pierced, scrolling, brackets over tripod bases terminating in scroll feet

SKU: C2871

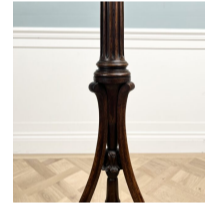
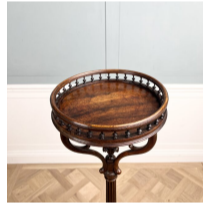
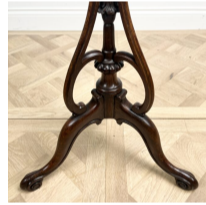
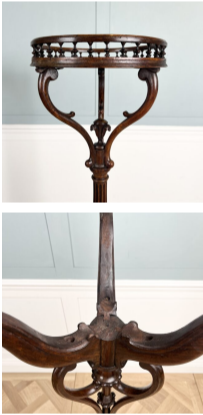
Depth: 49 cm (19.25 inches)

Diameter: 23.5 cm (9.25 inches) internal diameter of top

Height: 119 cm (46.75 inches)

Width: 49 cm (19.25 inches)

Year: English. Circa 1765



Dating from the 1830's, this pair of torcheres are based on the designs of Thomas Chippendale, whose Director was re-published in the 1830's