

# Adam Calvert Bentley and Ardgowan Antiques

Call +44 7545 220052



**Pair of Louis XVI Style Gilt-Bronze and Marble Candelabra**

**£1,800**

A pair of Louis XVI style gilt-bronze and marble candelabra in the manner of Delafosse, each with a pair of fluted urn sockets on scrolling branches flanking a flaming torch, on a circular base with toupie feet

---

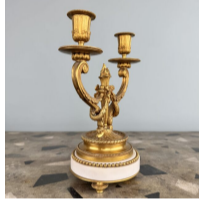
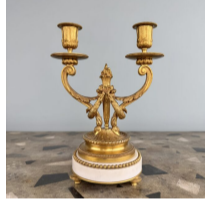
**SKU:** A5620

**Depth:** 14 cm (5.5 inches)

**Height:** 28 cm (11 inches)

**Width:** 21 cm (8.25 inches)

**Year:** French. circa 1890



Delafosse [sometimes De la Fosse], Jean-Charles (1734-1789) was a French architect and draughtsman working in the Neoclassical style in France during the second half of the 18thC. He also designed decorations and engraved them himself and published his *Nouvelle Iconologie Historique* in 1769.