

Adam Calvert Bentley and Ardgowan Antiques

Call +44 7545 220052



Rare 18th Century Creamware Screw-Top Box

£1,450

A rare 18th century creamware box attributed to Cockpit Hill factory, Staffordshire. The circular form with slightly domed lid decorated in polychrome enamels of chinoiserie style with a female figure standing in a garden setting and surrounded by flowers and fruiting trees and with screw-thread to secure it to the box with gently waisted sides decorated with floral sprays.

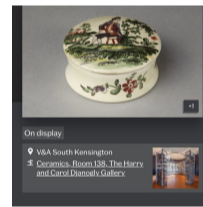
The technical skills involved in manufacturing such objects in creamware, with precise fitting screw threads accounts for the rarity of this type of box. It would require a great understanding of the materials and to what extent they would shrink during the firing process, in order to make them.

SKU: C4757

Diameter: 7.5 cm (3 inches)

Height: 3.5 cm (1.5 inches)

Year: English. Circa 1770



Provenance:

Bryan Bowden Antiques 1998

The Rosemary Slater Creamware Collection

The only similar example known to exist is in the collection of the V&A Museum, London (here illustrated).

Adam Calvert Bentley
and
Ardgowan Antiques