

Adam Calvert Bentley and Ardgowan Antiques

Call +44 7545 220052



Rare George II Gilt-Brass Wall-Sconce

£695

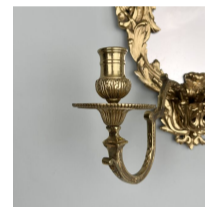
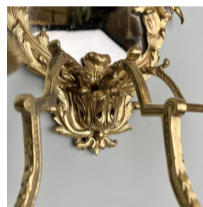
A rare George II gilt-brass wall light, the cartouche-shaped mirrored backplate. contained within a baroque scrollwork frame surmounted by an Apollo mask and supporting three scroll candle-branches

SKU: B5014

Height: 52 cm (20.25 inches)

Width: 33 cm (13 inches)

Year: perhaps Birmingham, circa 1735



Birmingham had been a city of metal-founders since the middle-ages and it was a securely-based centre for this by the early 18th century. In the middle years of the 18th century, the designs and works produced began to get more ambitious, reaching its apogée with the items produced by Matthew Boulton in the second half of the 18th century. One of the more innovative producers was Thomas Turner who established his Brass House in Coleshill Street in 1740. There were other founders also applying for various patents etc, at this time such as William Chapman and John Pickering, and the surviving pattern-books from the period show quite elaborate small-scale rococo artefacts such as watch-stands, handles and lock-plates for furniture and doors, etc.