

Adam Calvert Bentley and Ardgowan Antiques

Call +44 7545 220052



Rare Pair of George II Gilt-Brass Wall-Lights

£1,900

A rare, matched pair, of George II gilt-brass wall-lights, each cartouche-shaped, mirrored backplate with scrollwork frame surmounted by a sunburst mask flanked by foliate scrollwork and supporting a single acanthus cast scroll candle branch and nozzle, one supported by a satyr mask the other by the mask of a nymph, also flanked by leaf-scrolls

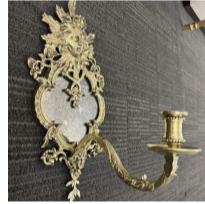
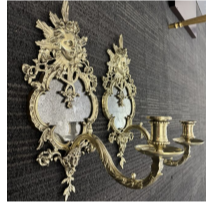
SKU: B5135/C

Depth: 24 cm (9.5 inches)

Height: 42 cm (16.5 inches)

Width: 22 cm (8.75 inches)

Year: mid 18th century, Birmingham?



It has been suggested that these wall-lights might have been made for one of the private boxes at Vauxhall Gardens