

Adam Calvert Bentley and Ardgowan Antiques

Call +44 7545 220052



Set of Fifteen Hand Painted Plates by Camille Le Tallec for Tiffany New York

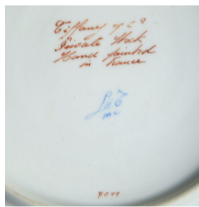
hand painted with borders of scrolling stylised foliage and swags of beads and flowers. Inscribed on the back "Tiffany & Co. Private stock. Hand painted in France". with the original Tiffany & Co New York pads.

SKU: N/A

Depth: 2.5 cm (1 inch)

Diameter: 26 cm (10 inches)

Year: French. 20th Century



Camille Le Tallec was born in Paris from Breton of Lorient and Picard ancestry. He graduated in 1929 from the prestigious École du Louvre in Paris with a thesis on the Nast porcelain of the 18th century. He then took over, in 1930, the familial hand-painted porcelain studio founded in Belleville (Paris) early in the century.

Rapidly, Le Tallec decided to continue in the tradition of the Vincennes porcelain and Sèvres porcelain, expanding the small and local business, the Atelier Le Tallec. In thirty years, the studio created hand-painted porcelain tablewares for famous individuals such as Queen Elizabeth II of the United Kingdom, Kings Mohammed V and Hassan II of Morocco, the Ville de Paris or the French Republic, amongst others.

Atelier Le Tallec in the Viaduc des Arts

In 1961, Le Tallec started a fruitful collaboration with the silver and jewelry firm Tiffany & Co which led in 1990 to the Atelier Le Tallec's incorporation into the American company, one year before his death in Paris. Tiffany's and Le Tallec designed successful original and private porcelain patterns that can be seen both at the Viaduc des Arts of the promenade plantée in the 12th arrondissement of Paris and in all Tiffany's stores in the United-States.

Over 60 years, Le Tallec has maintained traditional hand-painted porcelain. He preserved and revisited about 375 original and historical patterns signed by the Le Tallec's marks.[5] Atelier Le Tallec was inducted as a member of the Grands Ateliers de France (the fifty best studios in France) in 2000.

Le Tallec also acquired from 1935 to 1955 prestigious pieces of European porcelain.[6] His exceptional collection was dispersed by auction in 1990, and some masterpieces acquired by international museums such as the Louvre, the musée de la Faïence de Marseille, and the musée de l'Île-de-France[7] and various porcelain collectors.

He was a Chevalier de la Légion d'honneur appointed in 1976 by a schoolmate of his: Edgar Faure, then president of the French National Assembly.