

# Adam Calvert Bentley and Ardgowan Antiques

Call +44 7545 220052



## Set of Four Raised-Work Appliqué Panels

£2,400

An unusual set of 18th century needlework appliqué scenes depicting a conversation, a musician and his dog, an Ottoman, a beggar, a cavalier, and a soldier all in landscapes and worked in brightly coloured wools with satin faces and embellished with cut steel beads and metal threads. Currently applied to the original yellow silk triangular ground but they could be re-applied onto a new ground.

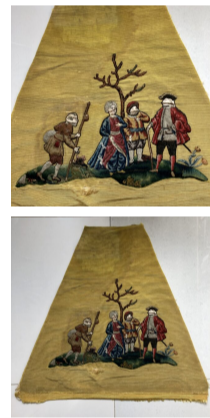
---

**SKU:** C2350

**Height:** 62 cm (24.5 inches)

**Length:** at bottom: 69 cm (27 inches) at top 22 cm (8.75 inches)

**Year:** French. mid 18th century



Adam Calvert Bentley  
and  
Ardgowan Antiques