

Adam Calvert Bentley and Ardgowan Antiques

Call +44 7545 220052



A set of Four George III Painted Armchairs Attributed to Gillows

£4,950

A set of four George III black japanned and polychrome decorated open armchairs attributed to Gillows of Lancaster each painted with bellflower pendants, stiff leaves, rosettes, fan medallions and ribbon tied swags and floral pendants, with a shield shaped back and bibbed splats, on ring turned tapering front legs and square splayed rear legs.

Please note that this set of four chairs is also available listed separately as two pairs

SKU: C4195

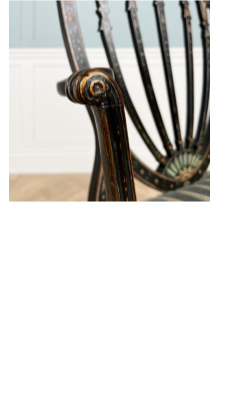
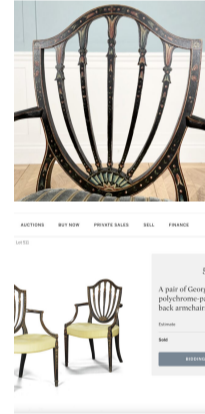
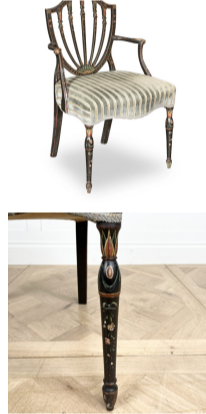
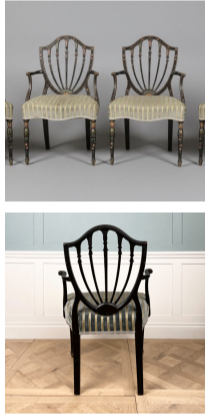
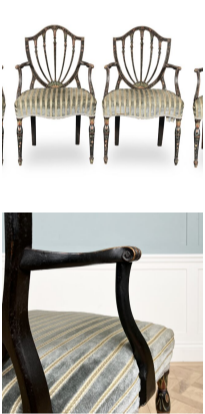
Depth: 51 cm (20 inches)

Feet Height: 47 cm (18.5 inches)

Height: 95 cm (37.5 inches)

Width: 58 cm (22.75 inches)

Year: English. Circa 1785



A relatable pair of chairs (illustrated) were sold Sotheby's London *Mallett at Bourdon House* Lot 511 (£19,200)

Footnotes

A chair design, dated circa 1785, which is identical to those in the present set of chairs is illustrated in *Gillow Furniture Designs, 1760-1800*, introduction and ed. by L. Boynton, 1995, Royston, fig. 260. An almost identical drawing, albeit of slightly cruder execution, appears in S. Stuart, *Gillows of Lancaster and London, 1730-1840*, Vol. I, 2008, Woodbridge, fig. 1, p.134. This latter example is evidently one of a group of reproductions, also dating to circa 1785, taken from the "Journeymen's Price Agreement" which is therein described as: 'Camel Back Stay Rail, 5 splat escutcheon or shield'.

Adam Calvert Bentley
and
Ardgowan Antiques