

# Adam Calvert Bentley and Ardgowan Antiques

Call +44 7545 220052



Antique Samuel Henry Alken (1810 - 1894); Watercolour of a Coaching Scene

£450

A watercolour of a coaching scene showing the coach speeding down a country road with a cottage in the distance, a young boy and his dog resting on the grassy verge. Signed S. Alken lower right. Framed and mounted with old Christies stencil verso.

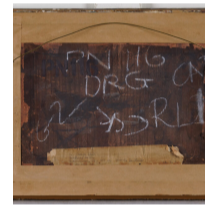
---

**SKU:** A5553

**Height:** 16 cm (6.5 inches) excluding frame

**Width:** 26.5 cm (10.25 inches) excluding frame

**Year:** circa 1800



## Samuel Henry Alken

(1810 - 1894)

Samuel Alken Sr. (1756 1815) was an English artist

Samuel Alken entered the Royal Academy Schools, London, as a sculptor in 1772. He published *A New Book of Ornaments Designed and Etched by Samuel Alken* in 1779, and later established himself as one of the most competent engravers in the new technique of aquatint.

His works included plates after George Morland, Richard Wilson, Thomas Rowlandson and Francis Wheatley. His plates for *Sixteen views of the lakes in Cumberland and Westmorland* after drawings John Emes and John Smith were published in 1796, and a set of aquatint views of North Wales after drawings by the Rev. Brian Broughton in 1798.